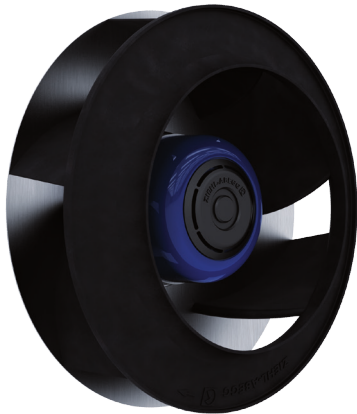


Vpro-ECblue

for single phase alternating current, 200-277 V

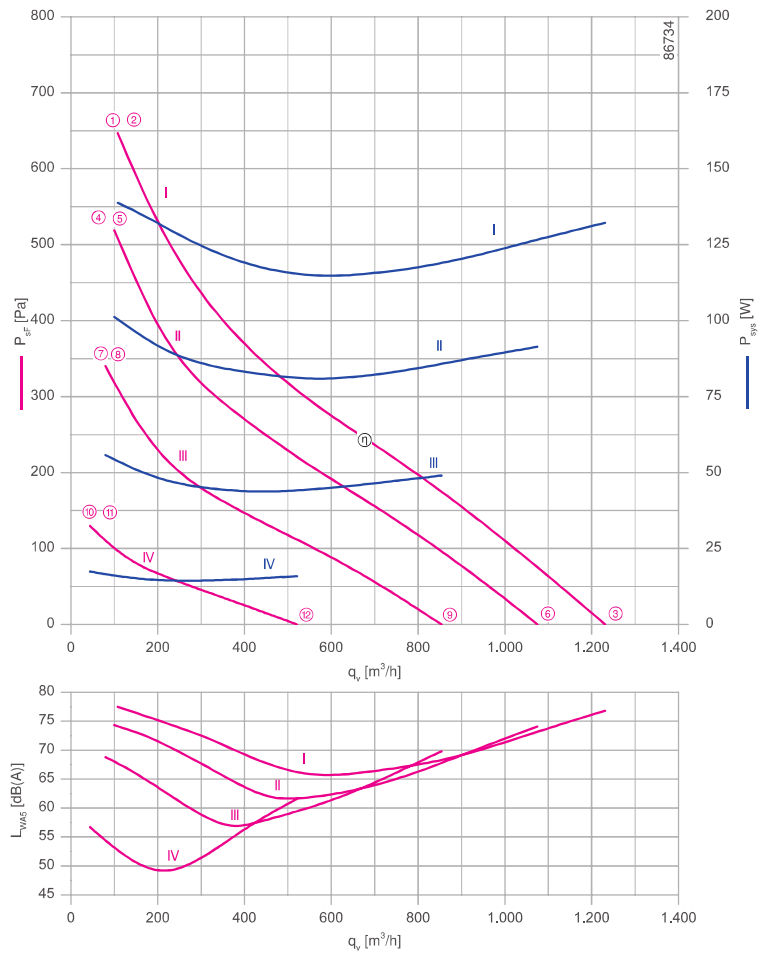
RH22V-6IP



Description

Motor technology: EC
 Rated voltage U: 1~200-277 V*
 Rated frequency f: 50/60 Hz*
 Motor input power P: 0.14 kW*
 Rated current I: 1.05-0.77 A*
 Rated speed n: 3280 min⁻¹*
 Thermal class: THCL155*
 Min. permitted ambient temperature t_{r1} : - 5 °C
 Max. permitted ambient temperature t_{r2} at n_{max} : 60 °C
 Electrical connection: Integrated controller with attached cable
 Number of blades : 6
 Balancing quality: G 6.3
 Protection class: IP44
 Motor protection: Integrated active temperature management
 Impeller : High Performance Composite Material, uncoated, black
 Conformity: CE
ErP-data
 Not subject to ErP regulations ($P_1 < 125$ W)
 *Rated data

Characteristic curve



measured with inlet ring, without guard grille according to ISO 5801

- Inlet ring 00407899 Page 450
- Connection diagram KT00036A Page 547
- System components Page 448

Dimensions [mm]

Free-running motor impeller RH
in installation position H/Vu/Vo

