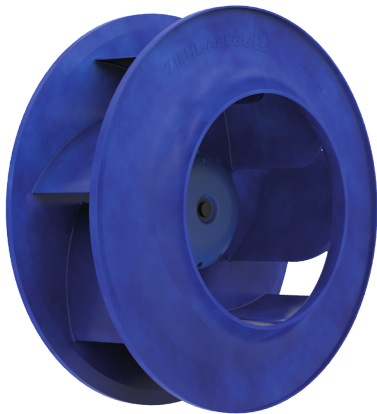


# Cpro-ECblue

for three phase alternating current, 380-480 V

RH63C-ZIK



## Description

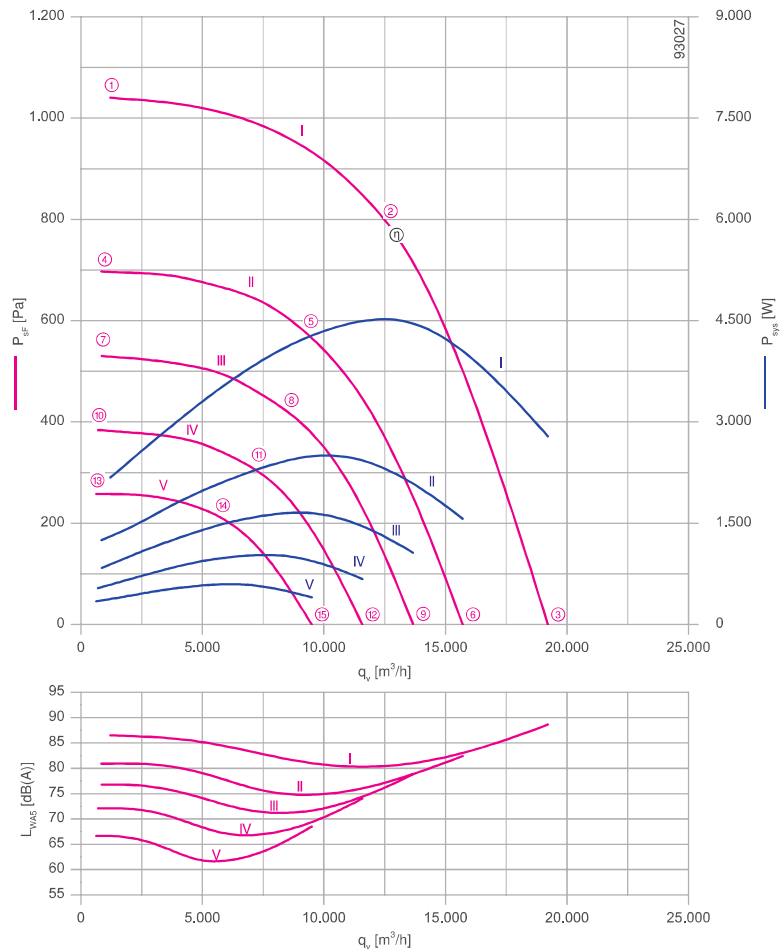
Motor technology: EC  
 Rated voltage U: **3-380-480 V\***  
 Rated frequency f: **50/60 Hz\***  
 Motor input power P: **4.60 kW\***  
 Rated current I: **7.20-5.80 A\***  
 Rated speed n: **1400 min<sup>-1</sup>\***  
 Thermal class: **THCL155\***  
 Min. permitted ambient temperature  $t_{r1}$ : -20 °C  
 Max. permitted ambient temperature  $t_{r2}$  at  $n_{max}$ : 40 °C  
 Electrical connection: integrated Controller  
 Number of blades: 7  
 Balancing quality: G 2.5  
 Protection class: IP54  
 Motor protection: Integrated active temperature management  
 Impeller: ZAmid, uncoated, Ultramarine blue  
 Conformity: ErP 2015, CE

### ErP-data

Efficiency  $\eta_{start}$ : 65.6 %  
 Efficiency:  $N_{actual} = 69.2 / N_{target} = 62^{**}$   
 EC controller integrated

\*Rated data  
 \*\*ErP 2015

## Characteristic curve

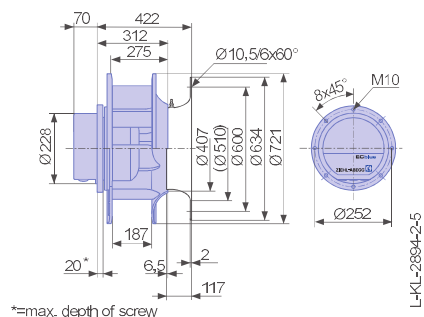


measured with inlet ring, without guard grille according to ISO 5801

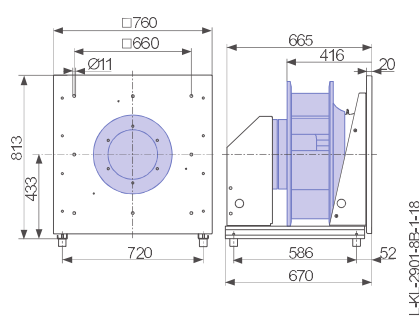
➤ Inlet ring	00401301	Page 450
➤ Connection diagram	1360-401	Page 548
➤ Rubber dampers	30x30 / 40	Page 454
➤ Spring vibration dampers	MSN 6	Page 454
➤ System components		Page 448

## Dimensions [mm]

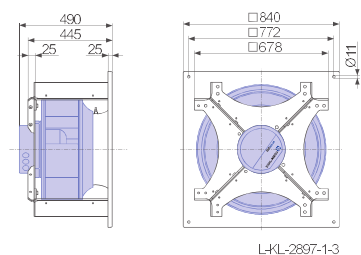
Free-running motor impeller RH  
 in installation position H/Vu/Vo



Plug fan ER in installation position H



Ventilation unit GR in installation position H



\*=max. depth of screw

