

Documentation

Fan type: **RG28P-4EK.4I.1R**

Ziehl-Abegg part no. 112305/5721067

Content

1	Specification sheet	2
2	Final drawings	3
2.1	Assembly drawing (L-AL-4327)	3
2.2	Connection diagram (151XA)	4
3	Fan performance curve	5

1 Specification sheet

Specification Sheet

Customer: Siemens Tanjin	Ziehl-Abegg contact no.:
--------------------------	--------------------------

Product identification

Line	Part Number	Part Nomenclature
1	112305/5721067	RG28P-4EK.4I.1R

Applicable Documents

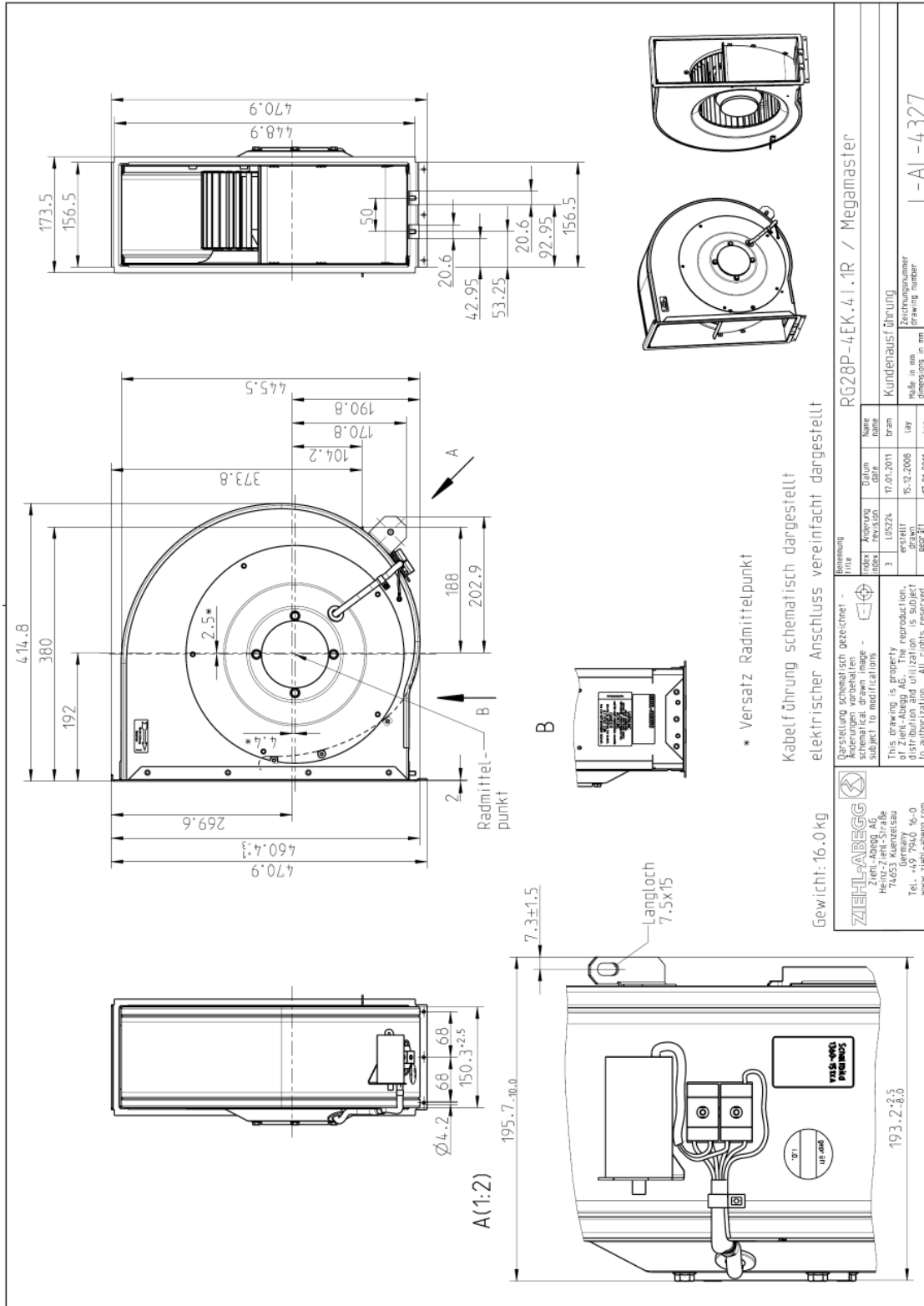
Doc. Type	Doc. No. & Title	Doc. Rev.
Ziehl-Abegg catalogue	Centrifugal fans	0
Dimension Drawing	L-AL-4327	0

Technical Data

Bearing type	Ball bearing DIN625 Size 6002-2Z C3
Applicable Standards	DIN ISO IEC
Application	Moisture and hot climate protection
Supply voltage	1~ 230 V ±10% 50 Hz 1~ 230 V ±10% 60 Hz
Motor power	0.69 kW (50Hz)
Minmal pressure drop	PsF min. 250Pa (50Hz) PsF min. 450Pa (60Hz)
Motor protection	IP10
Motor insulation class	155 (previous: insulation class F)
Impregnation	Standard Impregnation
Number of poles	4
Speed	1360 rpm (50Hz) 1440 rpm (60Hz)
Motor current	3.0 A (50 Hz) 4.5 A (60 Hz)
Motor-Recognized Component	E111399 ZA-155
UL file no.	MK106-4EK.14.U

2 Final drawings

2.1 Assembly drawing (L-AL-4327)



3 Connection diagram (104XB)

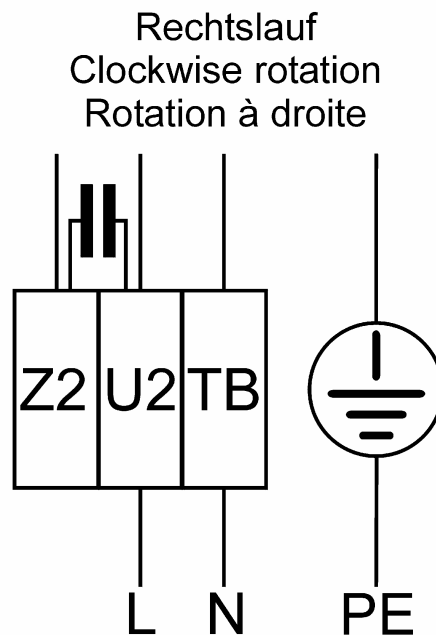
1~Motor mit Kondensator und Thermostatschalter
(falls eingebaut).

1~Motor with capacitor and thermostatic switch
(if built in).

Moteur monophasé avec condensateur et interrupteur
thermostatique (si incorporé).

TB	braun	brown	brun
U2	blau oder grau	blue or grey	bleu ou gris
Z2	schwarz	black	noir

151XA-02



Anschlussschaltbild im Anschlusskasten aufbewahren.

Keep wiring diagram in terminal box.

Conserver le schéma de raccordement dans la boîte à bornes.

Fan performance curve

